



All-In Clark County Regional Climate Collaborative: Year in Review

May 27, 2025



Agenda

- Greeting & Introduction from Robert Burgy, Climate and Sustainability Program Manager for the Clark County Department of Environment and Sustainability
 - Review and refresher of the *All-In* Regional Climate Collaborative Interlocal Agreement and progress
 - Overview of Progress to Date
 - Questions & Answers
-



Meeting Objective

- ✓ Share regional progress and accomplishments under the *All-In* Regional Climate Collaborative.
-



Introductions



Robert Burgy
Climate and Sustainability
Program Manager, DES



Kim Lungren
Founder & CEO
Kim Lunggren Associates (KLA)





Regional Efforts



***All-In* Regional Climate Collaborative**

- **Sept 2023: First Working Session**

- **Jan 2024: Interlocal Agreement Fully Executed**

- Clark County, Boulder City, Henderson, Las Vegas, Mesquite, North Las Vegas, RTC, SNWA

- **Interlocal Agreement Objectives**



- Foster Convening and Capacity Building

- Deliver Regional Public Education and Outreach



- Take Action on Climate Solutions

- Share and Leverage Resources



Icons made by iconjam, anilofex, mynamepong,
and Vector Portal, all from www.flaticon.com



All-In Regional Climate Collaborative

16 Meetings of the RCC Participants has yielded the following:

- Applied for \$500 million grant for Building Improvement Hub
- Updated the regional GHG inventory
 - Trained RCC participants to update the GHG inventory moving forward
- Developed priority metrics to track regional climate action progress
- Launched the *All-In* Community Education and Outreach Campaign

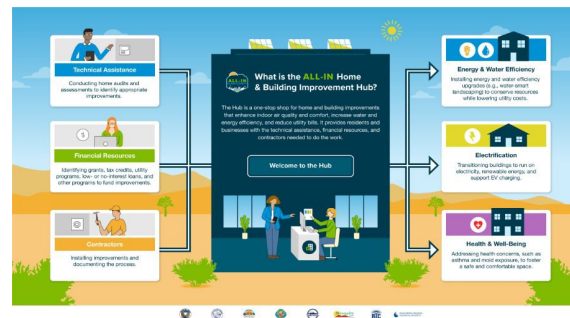


All-In Building Improvement Hub



Developed concept for a proposed resource hub to advance efficiency County-wide.

The current focus is on distributing energy efficiency information and developing tools for distribution.



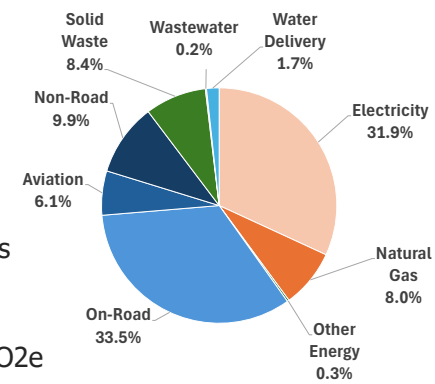


GHG Inventory



GHGs by Source 2022

- Two largest sources in our region:
 - On-road transportation
 - Electricity use
- Southern Nevada is well positioned to drive reductions in these areas.

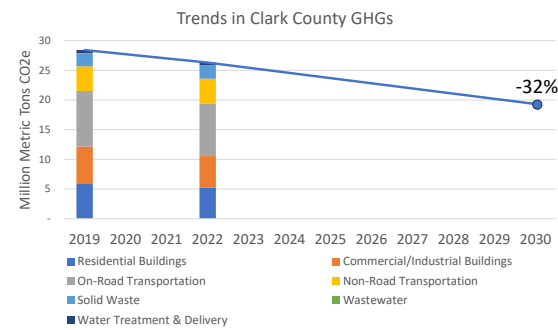


Total Emissions: 26.3 Million MTCO₂e

Source: 2022 Clark County Community GHG Inventory



All-In Reduction Pathways



- The *All-In* Clark County Plan set a GHG reduction target of 32% by 2030.
- Total GHGs reduced by 7% between 2019 and 2022.
- We're on track, but challenges lay ahead.



Priority Metrics to Track Regional Progress



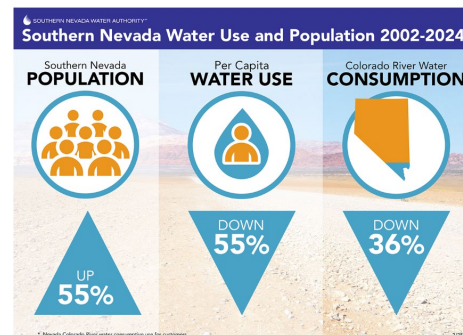
Clean Energy is Our Biggest Opportunity

- Countywide, we used 1.3 million MWh more electricity than in 2019.
 - (Roughly equivalent to all homes in North Las Vegas)
- However, total GHGs from electricity dropped by 14%!
 - Cleaner energy grid
 - Renewable Portfolio Standard
- Electricity is both our largest single source as well as fastest pathway to reductions.





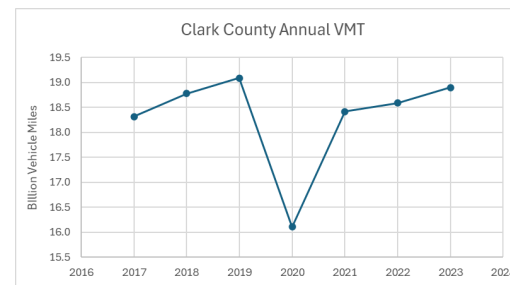
We've Seen this Story Before



- SNWA has shown that we can grow and thrive without ruining our water supply.
- We can do the same when it comes to preserving a livable climate.



Transportation on the Rebound



Source: NV DOT Annual Vehicle Miles Report

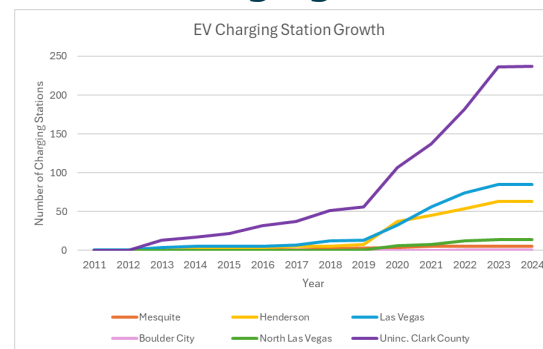
- Traffic is down relative to 2019, but in reality, it is still on the post-pandemic rebound.
- The County is expected to add 5 billion annual vehicle miles by 2050 under current development patterns (2024 RTC Transportation Demand Model)
- By 2050, Boulder City is projected to have a 28.27% increase in VMT from 2022 (289,928,207 annual VMT in 2050)



Electric Vehicle Charging

Public charging infrastructure has increased, supporting EV adoption.

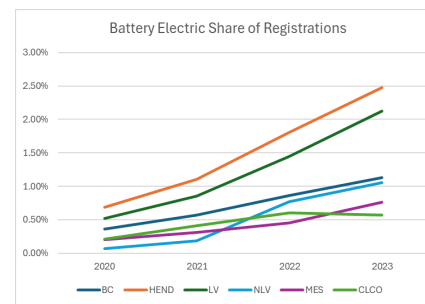
To accommodate future EV growth with publicly accessible charging, approximately 17,288 Level 2 Chargers and 1,105 DC Fast Chargers will be needed in the County by 2030.



Source: US DOE Alternative Fuel Data Center



EV Registrations

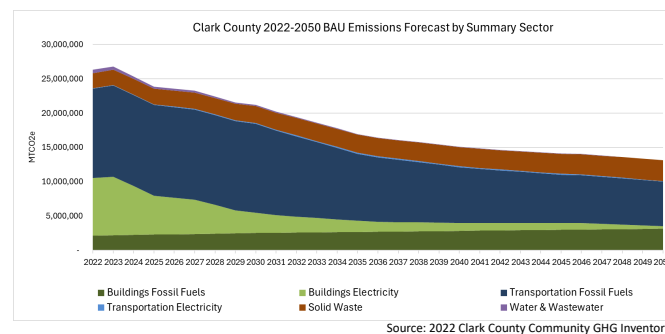


Source: Nevada Department of Motor Vehicles

- Widespread charging infrastructure is enabling more residents to comfortably adopt new technologies.
- Percentages seem small today, but in 2022, EVs in Clark County avoided nearly 90,000 tons of CO₂!



Growth Projections



If trends in Renewable Energy and EVs hold, we will make good progress towards targets.

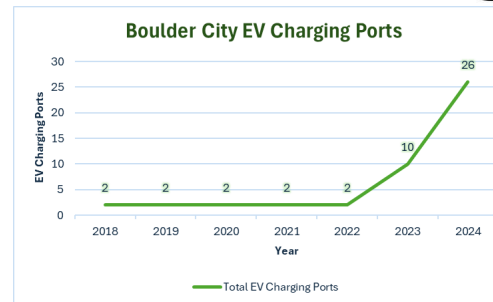
Will need to find additional 1.2 million MTCO2e reductions.



Boulder City



- Multiple new EV charging stations for fleet at Police Department as of late 2024!
- Charging infrastructure encourages community EV adoption and fleet electrification.
- One example of electrification to support load growth.



Source: DOE AFDC charging infrastructure data



All-In Community Education and Outreach Program



All-In Climate Education Program

- **Raise Awareness** of *All-In Clark County*
- **Grow Climate Literacy** Among Community Members
- **Be a Catalyst for Behavior Change** to Support High-Impact Strategies





All-In Climate Ambassadors

In Spring 2024, Clark County hired and trained **15 Ambassadors** to support the implementation of the *All-In* Community Plan through:

- Staffing outreach events
- Distributing *All-In* engagement materials
- Creating social media content
- Presenting to community groups
- Promoting high-impact actions
- Building relationships with CBOs





***All-In* Climate Ambassador Program Engagement Stats**

- **+100** Community events attended
- **+40** *All-In* hosted community events
 - Including **18** Webinars
- **17,869** Community members reached = climate conversations





Engagement Tools & Tactics



All-In Take Action Toolkit



All-In High-Impact Pledge Program

@SustainClarkCounty
on Facebook and Instagram
@SustainClarkCty on X

+190,000 reached in 2024 through
All-In Social Media Platforms
(Instagram, Facebook, & X)



All-In on Climate Action **Survey Results**

Questions centered around five high-impact action areas and climate perspectives to track community willingness, barriers, and opportunities related to taking action on climate change.

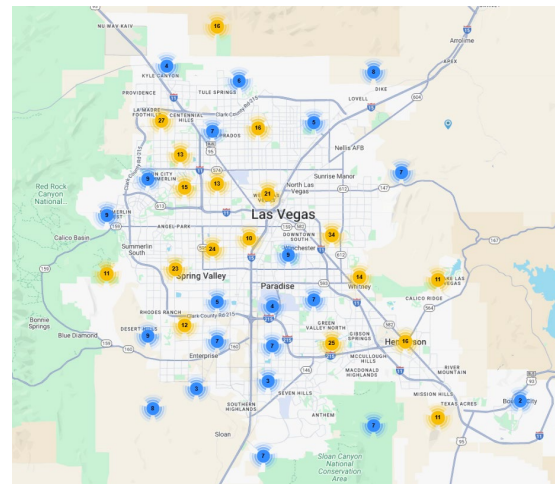
- **889 Participants**
- **5,000 Views**
- **Over 1,100 Comments**

Most participants are very concerned climate change will affect their community (68%) and think it's very important for Clark County to take action (71%).



Demographic Distribution

Out of the 479 participants who chose to report their zip codes, 95% of participants reside in Clark County.

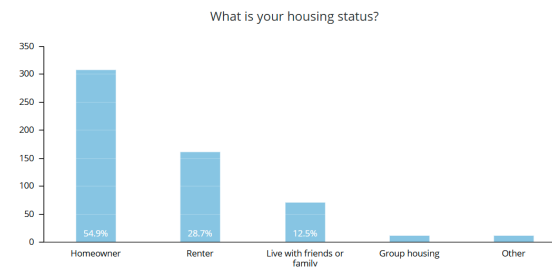




Demographic Distribution

The demographic distribution of respondents was more in line with census data than previous *All-In* surveys.

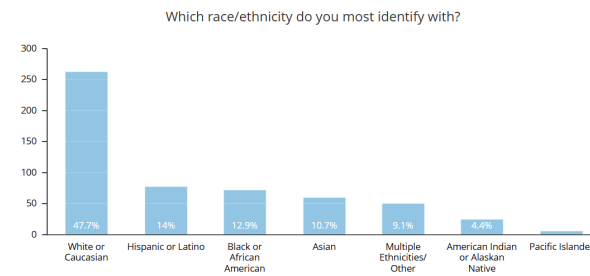
Percentage of homeowners more proportionately aligned with County census data (57% owner-occupied housing).





Demographic Distribution

The demographic distribution of respondents was more in line with census data than previous *All-In* surveys.





Climate Perspectives: Community Preparedness

PREVIOUS SURVEY

19% Feel their community is very prepared for climate impacts

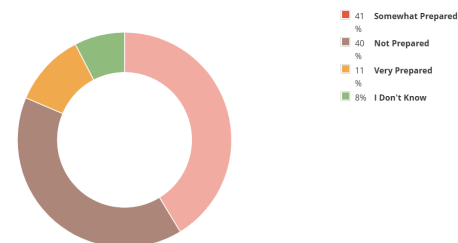
45% Feel their community is somewhat prepared

28% Feel their community is not at all prepared

Respondents to the Spanish-language survey feel their community is 'not at all prepared' (43%), or only 'somewhat prepared' (43%) for climate impacts.

CURRENT SURVEY

How prepared do you think your community is to address the impacts of climate change?



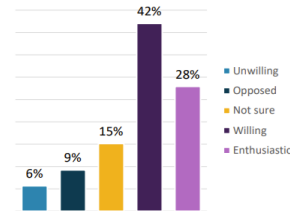
Since the previous survey, more respondents feel that Clark County is not prepared to address the impacts of climate change.



Willingness to Electrify

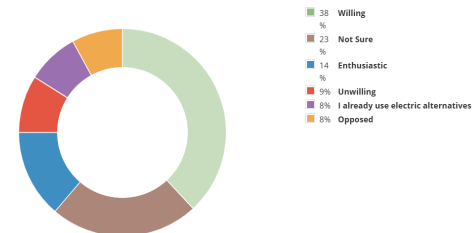
PREVIOUS SURVEY

Residential Electrification



CURRENT SURVEY

How willing are you to switch fossil fuel-dependent heating and cooling systems and appliances, like gas stoves and furnaces, to electric alternatives in your home?

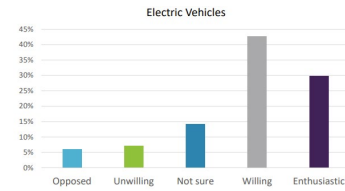


On the previous survey, 42% of participants were willing and 28% were enthusiastic to electrify their homes – higher numbers than the current survey results show. Uncertainty levels are also higher in the current survey.



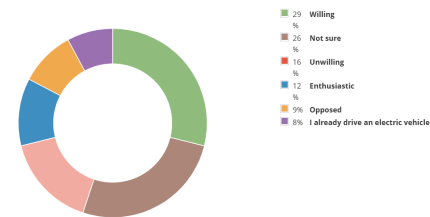
Willingness to Switch to an EV

PREVIOUS SURVEY



CURRENT SURVEY

How willing are you to purchase or lease an electric vehicle (EV) as your next personal vehicle?



On the previous survey, 43% of participants were willing and 30% were enthusiastic to switch to an EV – higher numbers than the current survey results show. Uncertainty levels are also higher in the current survey.



Questions?



Go All-In With Us!



AllInClarkCounty.com



@SustainClarkCounty on
Facebook and Instagram

@SustainClarkCty on X



Allin@ClarkCountyNV.gov



THANK YOU