

CITY OF BOULDER CITY

CITY PROPERTY

NON-FUNCTIONAL TURF REMOVAL



INTRODUCTION



- The Colorado River Basin spans over 246,000 square miles across seven U.S. states and Mexico.
- Managed by the Bureau of Reclamation (Department of the Interior).
- Water used for agriculture, municipal and industrial purposes, hydropower, fish and wildlife, and recreation.

CURRENT DROUGHT CONDITIONS



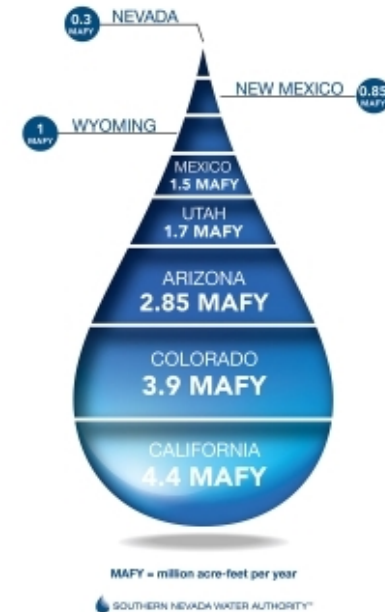
- Prolonged drought since 2000; one of the driest periods in over a century.
- Drought Contingency Plans (DCPs) implemented in 2019.
- Lake Powell and Lake Mead significantly below average and pose a risk to hydropower generation & water supplies
- 2025 forecasted to be a Tier One Shortage
- Sustainable water management is needed to address deficits.

WATER IMBALANCE & DROUGHT



WHERE THE WATER GOES:

Who Shares the Colorado River?

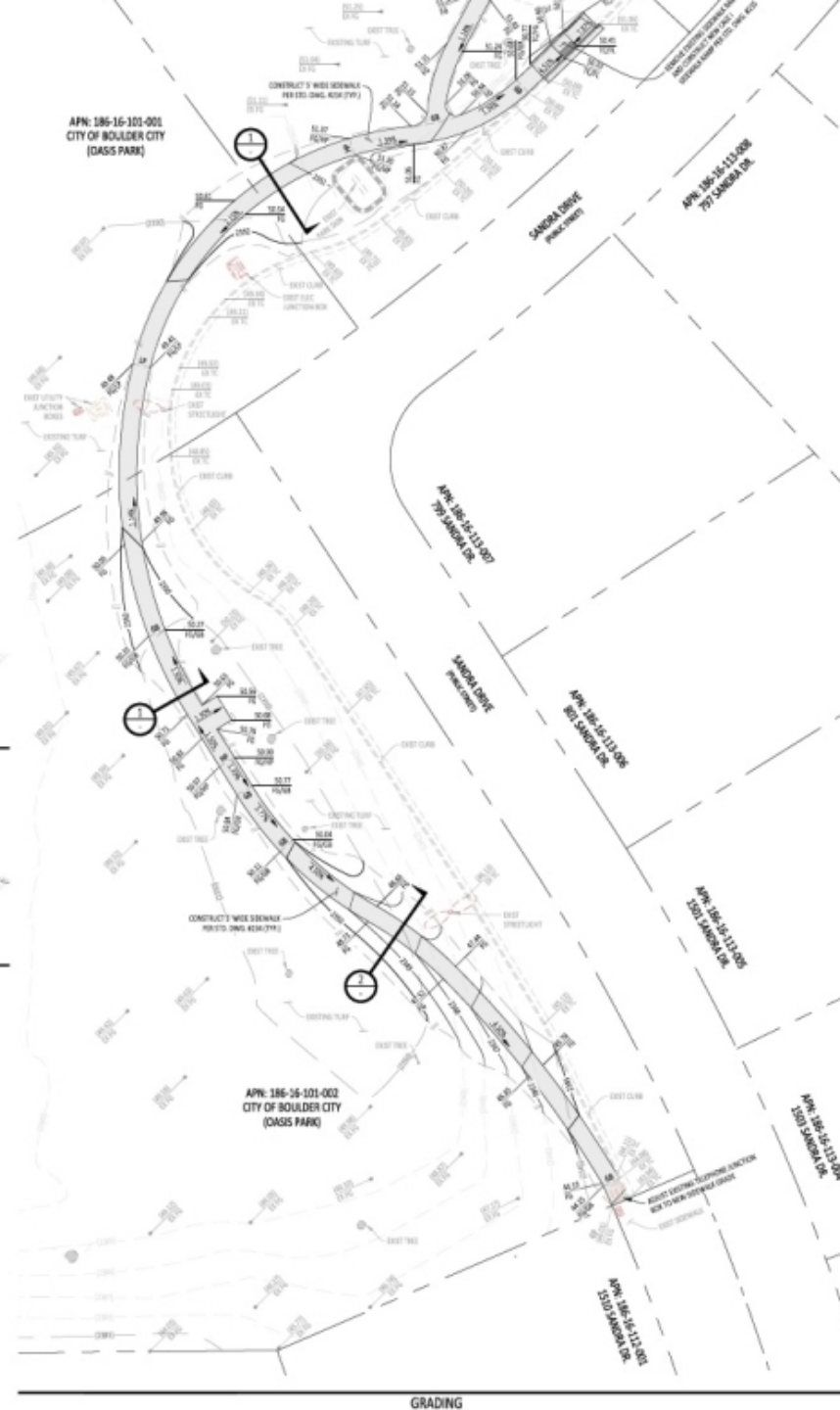
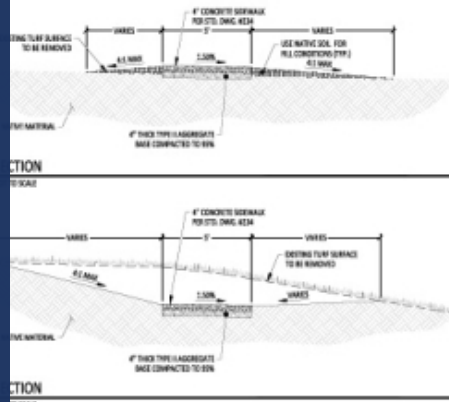


AB356



- A law enacted by the Nevada Legislature in 2021 will prohibit the use of Colorado River water to irrigate nonfunctional grass, beginning in 2027.
- The AB356 law applies to Southern Nevada commercial, multi-family, government, and other properties. It does not apply to grass in single family residences, such as grass in front and back yards.
- Boulder City is preparing to comply with the AB356 requirements by removing Non-Functional turf in various areas of the city.

AB356 PROGRESS



CITY OF BOULDER CITY, NEVADA • DEPARTMENT OF PUBLIC WORKS • ENGINEERING

THE PUBLIC WORKS DEPARTMENT MISSION IS TO IMPROVE THE LIVES OF BOULDER CITY CITIZENS THROUGH THE INFRASTRUCTURE WE PROVIDE AND MAINTAIN EACH DAY AND THE CAPITAL IMPROVEMENT PROJECTS THAT STRENGTHEN THE COMMUNITY.

RECORD DRAWING
Boulder City Engineering Division

RECORD DRAWING BY:
RECORD DRAWING PROJECT ENGINEER
DATE REVISION:
APPROVED:

SIDWALK PLAN

ISSUE DATE: 5/14/24
FILE NAME: Oasis_CD.DWG
CREATED BY: M. GRIMES



SHEET

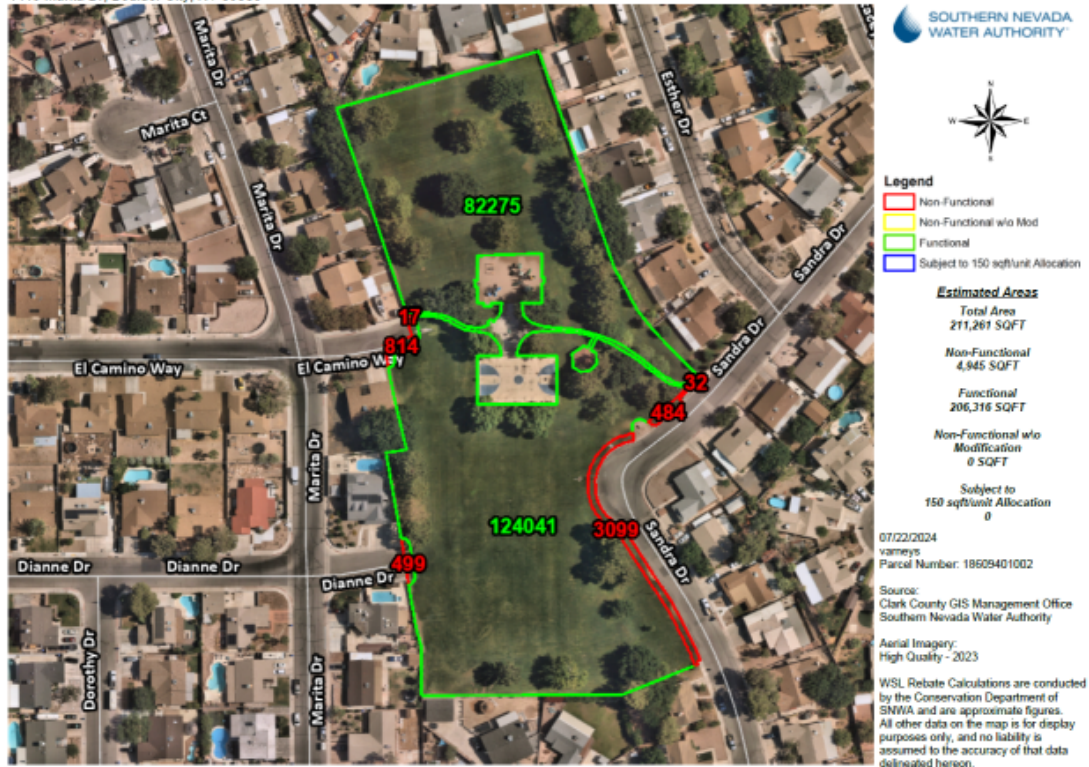
1

OASIS PARK



Oasis Park

1419 Marita Dr, Boulder City, NV 89005



- Oasis Park has a total area of 211,261 SQFT
- 4,945 SQFT is Non-Functional and will be removed to comply with the AB356 regulation.
- ADA improvements with new sidewalk, decomposed granite, and shrubs.

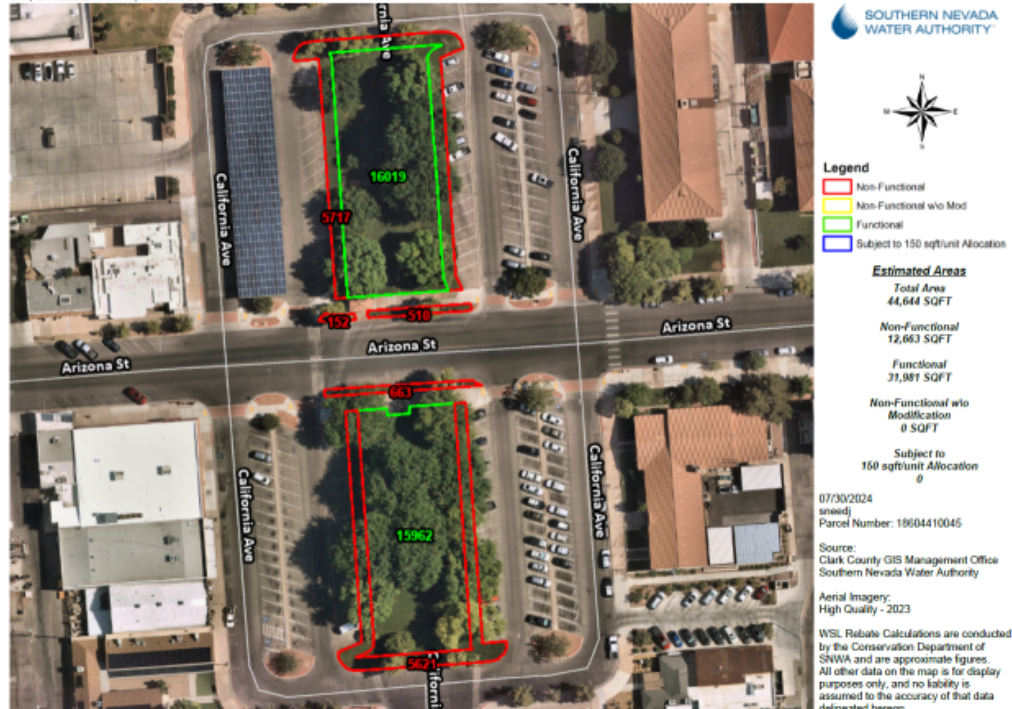
www.bcnv.org

NORTH AND SOUTH ESCALANTE



Lower and Upper Escalante

0 BOULDER CITY, NV 89005

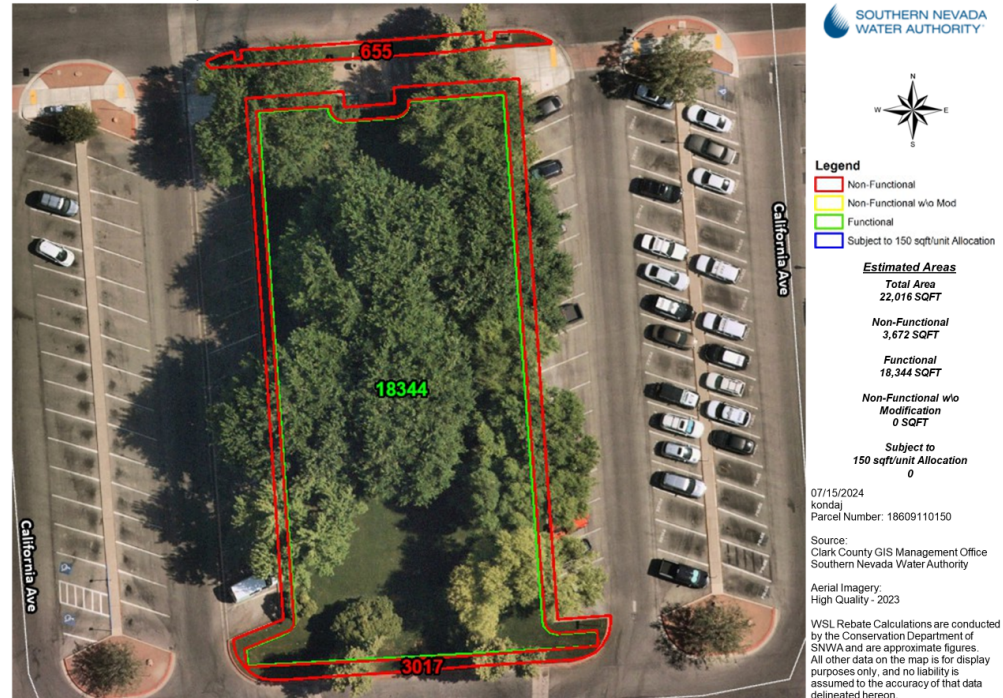


- This area is 44,644 SQFT
- 12,663 SQFT is Non-Functional and will be removed to comply with the AB356 regulation.
- Waiver request approved for South Escalante and waiver request submitted for North Escalante.
- Design includes pavers and decomposed granite to expand ADA accessibility and provide a walkway around the park.

SOUTH ESCALANTE PARK – AB 356 WAIVER



CALIFORNIA AVE , Boulder City, NV 89005



- This area is 22,016 SQFT
- 3,672 SQFT is Non-Functional and will be removed to comply with the AB356 regulation.
- Waiver granted by SNWA to follow paver walkway design.



NORTH & SOUTH ESCALANTE AB356 PROGRESS

FRANK CROWE PARK



BOULDER CITY- Frank Crowe Park

640 NEVADA WAY



- This area is 39,481 SQFT
- 4,017 SQFT is Non-Functional and will be removed to comply with the AB356 regulation.
- Decomposed granite installed and waiver submitted.

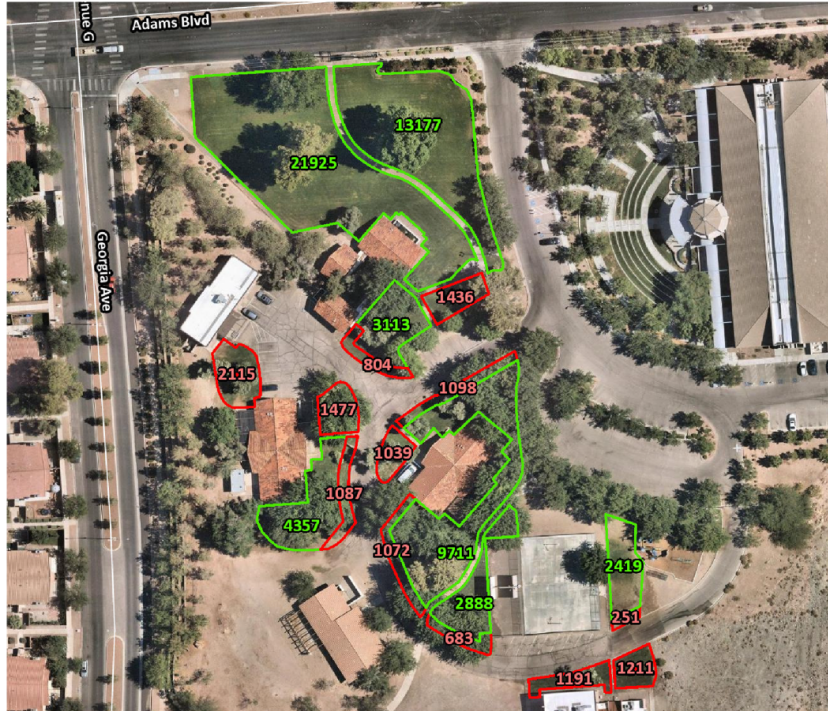


FRANK CROWE AB 356 PROGRESS

ABC COMPLEX



801 ADAMS BLVD



Legend
Non-Functional
Non-Functional w/o Modification
Functional
Subject to Allocation

Estimated Areas

Total Area
71054 SQFT

Non-Functional
13464 SQFT

Functional
57590 SQFT

Non-Functional w/o
Modification
0 SQFT

Subject to Allocation
0 SQFT

11/14/2022
sheet
Parcel Number: 18609701014
Photo Taken: Spring 2022

Source:
Clark County GIS Management Office
Southern Nevada Water Authority

WSL Rebate Calculations are conducted
by the Conservation Department of
SNWA and are approximate figures.
All other data on the map is for display
purposes only, and no liability is
assumed to the accuracy of that data
delineated herein.

- This area is 71,054 SQFT
- 13,464 SQFT is Non-Functional and will be removed to comply with the AB356 regulation.
- Decomposed granite and shrubs to be installed.

www.bcnv.org



ABC COMPLEX AB356 PROGRESS

BICENTENNIAL PARK, CITY HALL, & REC CENTER



Bicentennial Park, City Hall and Recreation Center
900 ARIZONA ST



- This area is 58,727 SQFT
- 18,323 SQFT is Non-Functional and needs removed to comply with the AB356 regulation.
- Waiver request to be submitted for front of Rec Center.
- Artificial turf or pavers to be installed on east side of Rec Center.
- Kurapia or other low water green ground cover to be installed in front of City Hall.



REC CENTER AB356 PROGRESS



PUBLIC PARKS



AB356 PROGRESS AT BOULDER CREEK

WILBUR SQUARE



Wilbur Square
1100 COLORADO ST, Boulder City, NV 89005



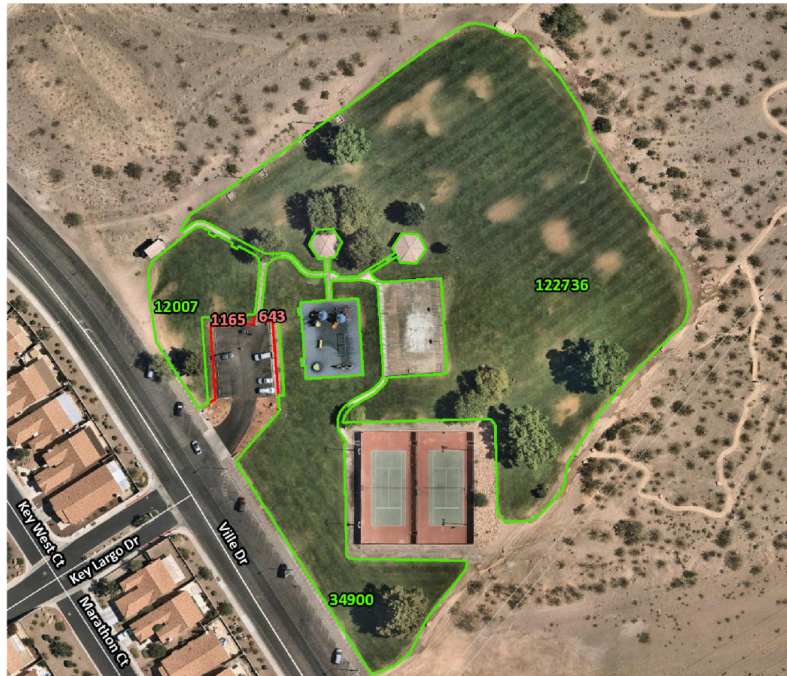
- Wilbur Square has 131,241 SQFT
- 14,639 SQFT is Non-Functional and will be removed to comply with the AB356 regulation.
- Waiver requested to SNWA for 5-foot setback extending sidewalk along Park and Utah and bringing new sidewalk along Colorado.

HEMENWAY PARK



City of Boulder City-HemenwayPark

401 VILLE DRIVE



Legend
Non-Functional
Non-Functional w/o Modification
Functional
Subject to Allocation

Estimated Areas
Total Area
171451 SQFT
Non-Functional
1808 SQFT
Functional
169643 SQFT
Non-Functional w/o Modification
0 SQFT
Subject to Allocation
0 SQFT

11/14/2022
sheet
Parcel Number: 18133702001
Photo Taken: Spring 2022

Source:
Clark County GIS Management Office
Southern Nevada Water Authority

WSL Rebate Calculations are conducted by the Conservation Department of SNWA and are approximate figures. All other data on the map is for display purposes only, and no liability is assumed to the accuracy of that data delineated herein.

- This area is 171,451 SQFT
- 1,808 SQFT is Non-Functional and will be removed to comply with the AB356 regulation.
- Decomposed granite and shrubs to be installed.

www.bcnv.org

DEL PRADO PARK



Legend
Non-Functional
Non-Functional w/o Modification
Functional
Subject to Allocation

Estimated Areas

Total Area
32232 SQFT

Non-Functional
900 SQFT

Functional
31332 SQFT

Non-Functional w/o
Modification
0 SQFT

Subject to Allocation
0 SQFT

11/02/2022
sneed
Parcel Number: 18609601014
Photo Taken: Spring 2022

Source:
Clark County GIS Management Office
Southern Nevada Water Authority

WSL Rebate Calculations are conducted
by the Conservation Department of
SNWA and are approximate figures.
All other data on the map is for display
purposes only, and no liability is
assumed to the accuracy of that data
delineated hereon.

- This area is 32,232 SQFT
- 900 SQFT is Non-Functional and will be removed to comply with the AB356 regulation.
- Pavers or decomposed granite to be installed.

www.bcnv.org



CITY AND OTHER GOVERNMENT FACILITIES

POLICE STATION



BOULDER CITY- Police Station
1005 ARIZONA ST



Legend
N
N
F
S

E

I

Nc

Su

11/14/2025
Aerial
Photo
Source:
Clark Co
Southern
WGS, Proj
by the C
Station ar
All other i
properties
assumed
delimited

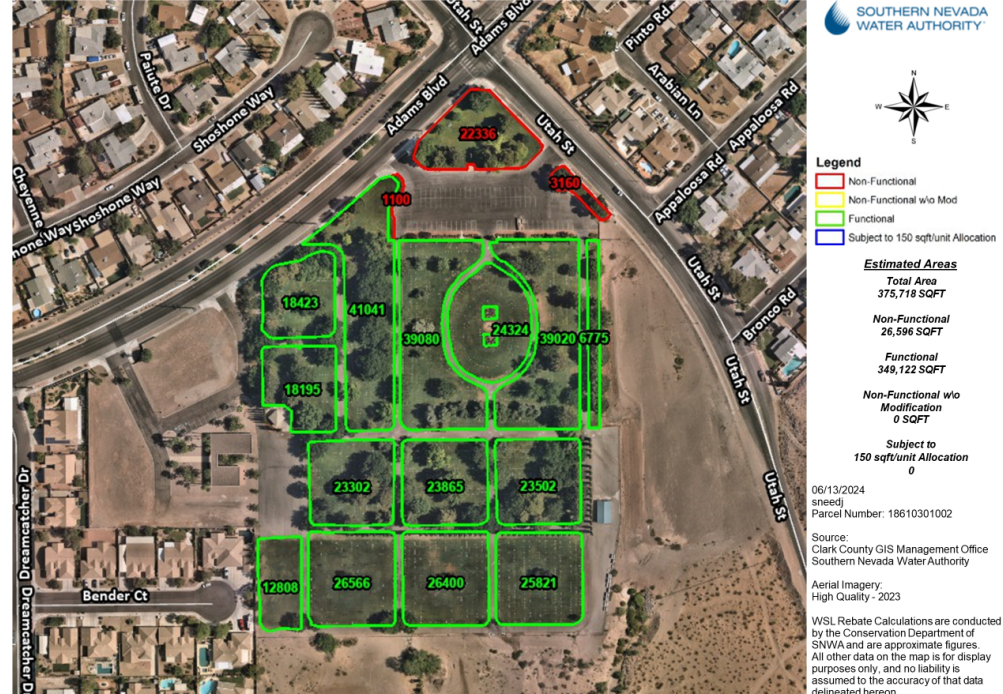
- This area is 2,186 SQFT
- 2,186 SQFT is Non-Functional and will be removed to comply with the AB356 regulation.
- Landscaping to be installed.

CITY CEMETERY



City Cemetery

501 ADAMS BLVD, BOULDER CITY, NV 89005



- City Cemetery has 375,718 SQFT
- 26,596 SQFT is Non-Functional and will be removed to comply with the AB356 regulation.
- Waiver to be submitted for usage area.
- Paver walkway with bench design forthcoming.

BOULDER CITY PUBLIC POOL



BOULDER CITY- Public Pool
861 B AVE



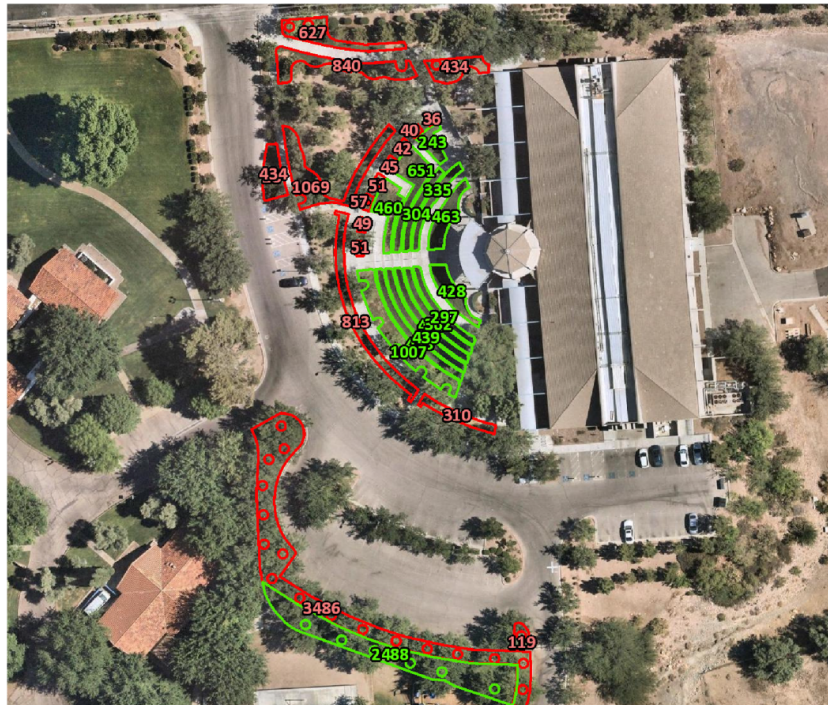
- This area is 138,957 SQFT
- 2,763 SQFT is Non-Functional and will be removed to comply with the AB356 regulation.
- Waiver submitted for no removal.
- Decomposed granite or paver walkway.

BOULDER CITY LIBRARY



Boulder City Library

701 ADAMS BLVD



Legend
Non-Functional
Non-Functional w/o Modification
Functional
Subject to Allocation

Estimated Areas

Total Area
16906 SQFT

Non-Functional
8531 SQFT

Functional
8375 SQFT

**Non-Functional w/o
Modification**
0 SQFT

Subject to Allocation
0 SQFT

11/14/2022
sheet
Parcel Number: 18609701015
Photo Taken: Spring 2022

Source:
Clark County GIS Management Office
Southern Nevada Water Authority

WSL Rebate Calculations are conducted
by the Conservation Department of
SNWA and are approximate figures.
All other data on the map is for display
purposes only, and no liability is
assumed to the accuracy of that data

- The BC Library area is 16,906 SQFT
- 8,531 SQFT is Non-Functional and will be removed to comply with the AB356 regulation.
- Xeriscape landscape work completed.

www.bcnv.org



FEEDBACK



PARKWAYS AND STREETSCAPES

CITY OF BOULDER CITY

UTILITIES DEPARTMENT, AUGUST 27, 2024



Questions