

PRE-2-M LED Specifications



Project Name:

City of Boulder City Post Top

Catalog Number:

PRE-2-M-T2-32LD-5-27K-UNV-PT-SL-7PINPER-3/8SC-DIM

Type:

T2

Contemporary design meets the new generation of LED green technology in this stunning luminaire, the **PRE-2-M**. The PRE-2-M series provides up to fifty percent energy savings over traditional HID light sources; and offers excellent beam control and LED life beyond 100,000 hours for 350 milliamp systems. The PRE-2-M is offered in ten optical distributions.

The PRE-2-M's fully-sealed housing features an exceptionally well-designed thermal management system that provides superior heat dissipation.

The PRE-2-M fixture is built with a cast aluminum housing, extruded aluminum arms and a spun aluminum, removable top.

The popular **PRE-2-M** is the perfect compliment to any university campus, business park, or walkway project where contemporary, architectural design is desired.

Ordering Information

MODEL	OPTICS	SOURCE	CURRENT	KELVIN	VOLTAGE	MOUNTING	FINISH	OPTIONS	OPTIONS
PRE-2-M	T2	32LD	5	27K	UNV	PT	SL	7PINPER	3/8SC-DIM
PRE-2-M	T1	16LD	3 350mA	27K7 2700K & 70CRI	UNV 120-277V	PT Post Top *Slips over 3" OD tenon X 4.5" tall as standard	BZ Bronze	PER 5PINPER	TL7 7-PIN Twist-Lock Wireless Control
	T2	32LD	5 530mA	30K7 3000K & 70CRI	8 347V		BK Black	7PINPER 3, 5, or 7 Pin Photo Receptacle w/shorting cap Requires Dimming Driver	3/8SC 3/8" Set Screw
	T3R	48LD	7 700mA	40K7 4000K & 70CRI	5 480V		GY Grey	PC-120	DIM 0-10v Dimming Driver
	T3		10 1050mA	50K7 4000K & 70CRI			SBK Smooth Black	PC-208	VWC Visionaire Wireless Controls *Consult Factory
	T3W		12 1200mA				WH White	PC-240	IR-(R, B, G) Illuminated Rings (Red, Blue, Green)
	T4W						SWH Smooth White	PC-277 Button Type Photocell	BBG Bird Deterrent
	T4A						GP Graphite	WSC-8 Motion Sensor 8' Mounting Height	CLS Cut-Off Louver Shield
	T5						GY Grey	WSC-20 Motion Sensor 9-20' Mounting Height	BHS Back House Shield
	T5W						SL Silver Metallic	WSC-40 Motion Sensor 21-40' Mounting Height This option will require (1) FSLR 100 remote for programming	
	T5WW						ZFP Zinc-Free Primer Coat		
							CC Custom Color		

Housing

The PRE-2-M's housing is constructed from durable, corrosion-resistant, cast aluminum. The spun aluminum top cap is .080 gauge, and easily removable for service. Silicone gasketing is provided for complete weather and insect protection.

Thermal Management

The PRE-2-M provides excellent overall thermal management by maximizing the efficiency of the heat sink in the fixture. This enables the PRE-2-M to withstand higher ambient temperatures and higher drive currents without degrading LED life.

Optical System

- The highest lumen output LEDs are utilized. High-performance acrylic optics feature industry leading Type 1, 2, 3, 4, 5, 5W and 5WR optical distributions. Acrylic optics are impact-resistant and rated to 94 percent translucence.
- L70 life of our LEDs is rated over 100,000 hours (for 350 mA). The optical system qualifies as IES full cutoff to restrict light trespass, glare and light pollution for neighborhood-friendly lighting. CRI values are 70.

Quali-Guard® Finish

- The finish is a Quali-Guard® textured, chemically pretreated through a multiple-stage washer, electrostatically applied, thermoset polyester powder coat finish, with a minimum of 3-5 millimeter thickness. Finish is oven-baked at 400 °F to promote maximum adherence and finish hardness.
- All finishes are available in standard and custom colors.
- Finish is guaranteed for five (5) years.
- Optional Zinc-Free Primer - Recommended within three miles of the ocean

Post Top Mount

The PRE-2-M contractor-friendly mounting hardware slips over 3" OD tenon X 4.5" tall as standard utilizing stainless steel hardware.

Electrical Assembly

- The PRE-2-M is supplied with a high-performance driver available in 350, 530 or 700. The driver is integrally-located in the housing, and is operational from 120 V through 480 V, 50 Hz to 60 Hz input.
- Power factor is 90%.
- THD less than or equal to 20%
- 10 kV surge protector supplied as standard.
- 0-10v Dimming Driver supplied as standard

Warranty

Five (5) year Limited Warranty on entire system, including finish. For full warranty information, please visit www.visionairelighting.com.

Options

- Button type photocell
 - 0-10v Dimming Driver
 - WattStopper FSP-211
 - Motion Sensor
 - Wireless Control
 - Illuminated Rings
 - Photo Receptacle
- Please consult factory for detailed custom options.

Listings

- PRE-2-M is cUL listed
- IDA Certification
- IP66 Rated
- LM79 and LM80
- Powder Coated Tough™

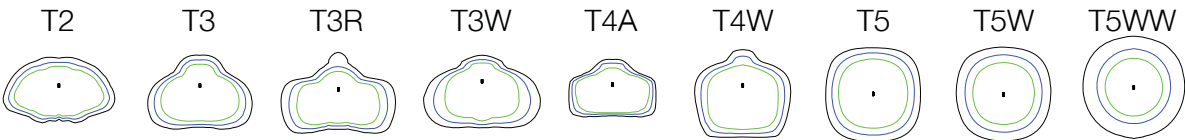


3000K must be selected with a fixed mount for IDA certification.
Fixed mount must be selected for IDA dark sky certification.

PRE-2-M ELECTRICAL LOAD (A)							
Ordering Nomenclature	System Watts	120	208	240	277	347	480
PRE-2-M-T3-16LD-3	16	0.13	0.08	0.07	0.06	0.05	0.03
PRE-2-M-T3-16LD-5	25	0.21	0.12	0.10	0.09	0.07	0.05
PRE-2-M-T3-16LD-7	34	0.28	0.16	0.14	0.12	0.10	0.07
PRE-2-M-T3-32LD-3	33	0.28	0.16	0.14	0.12	0.10	0.07
PRE-2-M-T3-32LD-5	51	0.43	0.25	0.21	0.18	0.15	0.11
PRE-2-M-T3-32LD-7	68	0.57	0.33	0.28	0.25	0.20	0.14
PRE-2-M-T3-48LD-3	49	0.41	0.24	0.20	0.18	0.14	0.10
PRE-2-M-T3-48LD-5	76	0.63	0.37	0.32	0.27	0.22	0.16
PRE-2-M-T3-48LD-7	102	0.85	0.49	0.43	0.37	0.29	0.21

PRE-2-M LED Specifications

Photometric Optical Summary

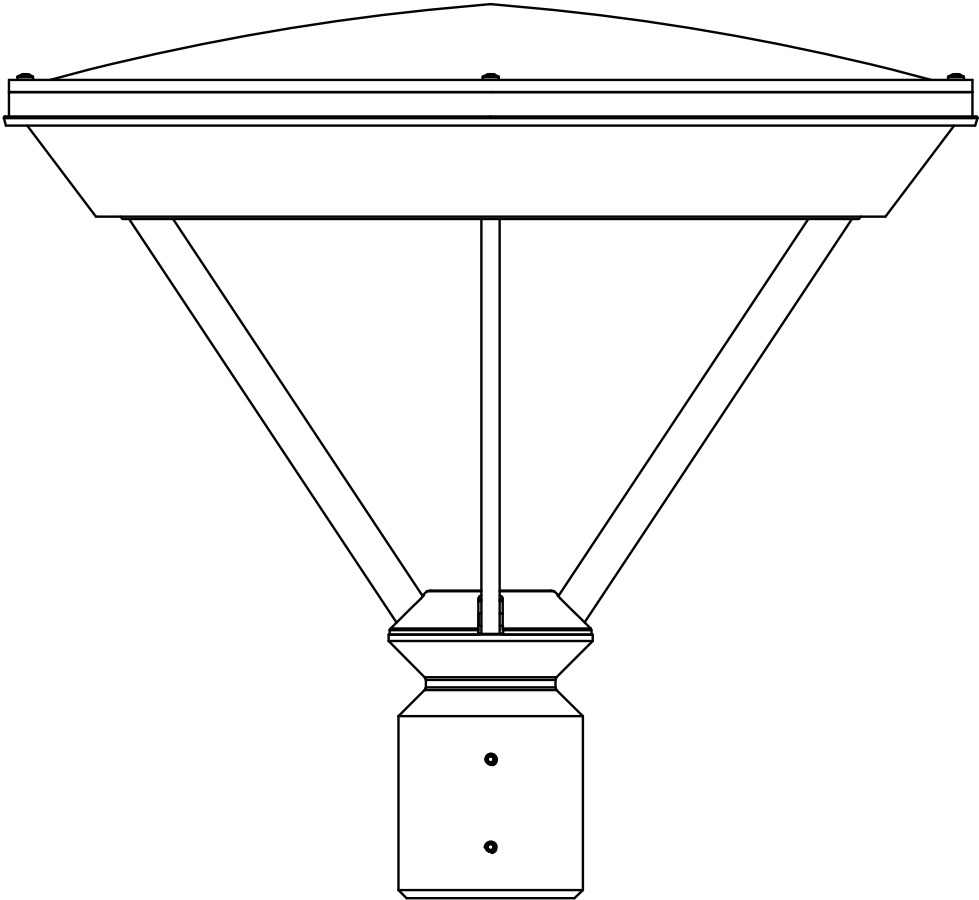


EPA Data

.88

Dimensions

Width:	PRE-2-M 20"
Height:	PRE-2-M 18.4"
Weight:	37 LBS



Motion Sensor Default Setting									
Type	High Mode	Low Mode	Time Delay	Cut off Delay	Sensitivity	Hold Off Set Point	Photocell On/Off	Ramp up Time	Fade Down Time
WSC- Default	10V	1V	5 Min	1 Hour	Max	Disabled	Disabled	Disabled	Disabled
WSC Range	0-10V	0-9.8V	5-30 Min	1-5 Hours	Low, Med, Max	1-250FC	1-250FC	1-60 Dec	1-60 Dec

PRE-2-M LED Specifications

PRE-2-M LED SPECIFICATIONS / Forward Optics																						
LED Count	Current & Watts	Optic	70CRI																			
			27K					30K					40K					50K				
			Lumens	B	U	G	LPW	Lumens	B	U	G	LPW	Lumens	B	U	G	LPW	Lumens	B	U	G	LPW
16LD	350 mA (16W)	T1	2118	2	0	2	129	2210	2	0	2	134	2187	2	0	2	133	2302	2	0	2	140
		T2	2075	1	0	1	126	2166	1	0	1	132	2143	1	0	1	130	2256	1	0	1	137
		T3R	2109	1	0	1	128	2200	1	0	1	134	2177	1	0	1	132	2292	1	0	1	139
		T3	2091	1	0	1	127	2182	1	0	1	133	2160	1	0	1	131	2273	1	0	1	138
		T3W	2129	1	0	1	130	2221	1	0	1	135	2198	1	0	1	134	2314	1	0	1	141
		T4W	2114	1	0	1	129	2205	1	0	1	134	2182	1	0	1	133	2297	1	0	1	140
		T4A	2173	1	0	1	132	2267	1	0	1	138	2243	1	0	1	137	2361	1	0	1	144
		T5	2232	1	0	1	136	2329	1	0	1	142	2305	1	0	1	140	2426	1	0	1	148
		T5W	2196	2	0	1	134	2292	2	0	1	139	2268	2	0	1	138	2387	2	0	1	145
		T5WW	2068	2	0	1	126	2158	2	0	1	131	2135	2	0	1	130	2248	2	0	1	137
16LD	530 mA (25W)	T1	3217	2	0	2	127	3356	2	0	2	132	3321	2	0	2	131	3496	2	0	2	138
		T2	3153	1	0	1	124	3290	1	0	1	130	3255	1	0	1	128	3427	1	0	2	135
		T3R	3203	1	0	1	126	3342	1	0	1	132	3307	1	0	1	130	3481	1	0	1	137
		T3	3177	1	0	1	125	3315	1	0	1	131	3280	1	0	1	129	3453	1	0	1	136
		T3W	3233	1	0	1	128	3374	1	0	1	133	3339	1	0	1	132	3514	1	0	1	139
		T4W	3210	1	0	1	127	3350	1	0	1	132	3315	1	0	1	131	3490	1	0	1	138
		T4A	3300	1	0	1	130	3444	1	0	1	136	3408	1	0	1	134	3587	1	0	1	142
		T5	3391	2	0	1	134	3538	2	0	1	140	3501	2	0	1	138	3686	2	0	1	145
		T5W	3336	2	0	1	132	3481	2	0	1	137	3445	2	0	1	136	3626	2	0	1	143
		T5WW	3141	2	0	1	124	3278	2	0	1	129	3244	2	0	1	128	3414	2	0	1	135
16LD	700 mA (34W)	T1	4169	2	0	2	123	4351	3	0	3	128	4305	3	0	3	127	4532	3	0	3	133
		T2	4086	1	0	2	120	4264	1	0	2	126	4220	1	0	2	124	4442	1	0	2	131
		T3R	4151	1	0	2	122	4332	1	0	2	128	4287	1	0	2	126	4512	1	0	2	133
		T3	4118	1	0	1	121	4297	1	0	1	126	4252	1	0	1	125	4476	1	0	1	132
		T3W	4191	1	0	1	123	4373	1	0	1	129	4328	1	0	1	127	4555	1	0	1	134
		T4W	4161	1	0	1	122	4342	1	0	1	128	4297	1	0	1	126	4523	1	0	1	133
		T4A	4278	1	0	1	126	4463	1	0	1	131	4417	1	0	1	130	4649	1	0	1	137
		T5	4395	2	0	1	129	4586	2	0	1	135	4538	2	0	1	134	4777	2	0	1	141
		T5W	4324	3	0	1	127	4512	3	0	1	133	4465	3	0	1	131	4700	3	0	1	138
		T5WW	4072	3	0	1	120	4249	3	0	1	125	4204	3	0	1	124	4426	3	0	1	130
PRE-2-M LED SPECIFICATIONS / Forward Optics																						
LED Count	Current & Watts	Optic	70CRI																			
			27K					30K					40K					50K				
			Lumens	B	U	G	LPW	Lumens	B	U	G	LPW	Lumens	B	U	G	LPW	Lumens	B	U	G	LPW
32LD	350 mA (33W)	T1	4154	2	0	2	126	4334	3	0	3	132	4289	3	0	3	131	4515	3	0	3	137
		T2	4071	1	0	2	124	4248	1	0	2	129	4204	1	0	2	128	4425	1	0	2	135
		T3R	4136	1	0	2	126	4316	1	0	2	131	4271	1	0	2	130	4496	1	0	2	137
		T3	4102	1	0	1	125	4281	1	0	1	130	4236	1	0	1	129	4459	1	0	1	136
		T3W	4175	1	0	1	127	4357	1	0	1	133	4311	1	0	1	131	4538	1	0	1	138
		T4W	4146	1	0	1	126	4326	1	0	1	132	4281	1	0	1	130	4506	1	0	1	137
		T4A	4262	1	0	1	130	4447	1	0	1	135	4401	1	0	1	134	4632	1	0	1	141
		T5	4379	2	0	1	133	4569	2	0	1	139	4522	2	0	1	138	4760	2	0	1	145
		T5W	4308	3	0	1	131	4495	3	0	1	137	4449	3	0	1	135	4683	3	0	1	142
		T5WW	4056	3	0	1	123	4233	3	0	1	129	4189	3	0	1	127	4409	3	0	1	134
32LD	530 mA (51W)	T1	6309	3	0	3	124	6584	3	0	3	130	6515	3	0	3	129	6858	3	0	3	135
		T2	6184	2	0	2	122	6453	2	0	2	127	6386	2	0	2	126	6722	2	0	2	133
		T3R	6282	2	0	2	124	6556	2	0	2	129	6487	2	0	2	128	6829	2	0	2	135
		T3	6231	1	0	1	123	6502	1	0	1	128	6434	1	0	1	127	6773	1	0	2	134
		T3W	6342	1	0	2	125	6618	1	0	2	131	6549	1	0	2	129	6894	1	0	2	136
		T4W	6297	2	0	2	124	6571	2	0	2	130	6503	2	0	2	128	6845	2	0	2	135
		T4A	6473	1	0	1	128	6755	1	0	1	133	6684	1	0	1	132	7036	1	0	1	139
		T5	6651	3	0	1	131	6940	3	0	1	137	6868	3	0	1	135	7230	3	0	1	143
		T5W	6544	3	0	1	129	6829	3	0	1	135	6757	3	0	1	133	7113	3	0	1	140
		T5WW	6162	3	0	1	122	6429	3	0	1	127	6362	3	0	1	126	6697	3	0	1	132
32LD	700 mA (68W)	T1	8178	3	0	3	120	8534	3	0	3	126	8445	3	0	3	124	8889	3	0	3	131
		T2	8015	2	0	3	118	8364	2	0	3	123	8277	2	0	3	122	8712	2	0	3	128
		T3R	8143	2	0	3	120	8497	2	0	3	125	8409	2	0	3	124	8851	2	0	3	130
		T3	8077	2	0	2	119	8428	2	0	2	124	8340	2	0	2	123	8779	2	0	2	129
		T3W	8221	1	0	2	121	8578	2	0	2	126	8489	1	0	2	125	8936	2	0	2	132
		T4W	8163	2	0	2	120	8517	2	0	2	125	8429	2	0	2	124	8872	2	0	2	131
		T4A	8391	2	0	1	123	8755	2	0	1	129	8664	2	0	1	128	9120	2	0	1	134
		T5	8621	3	0	1	127	8996	3	0	1	132	8902	3	0	1	131	9371	3	0	1	138
		T5W	8482	3	0	2	125	8851	3	0	2	130	8759	3	0	2	129	9220	3	0	2	136
		T5WW	7986	3	0	2	118	8334	3	0	2	123	8247	3	0	2	121	8681	3	0	2	128

PRE-2-M LED SPECIFICATIONS / Forward Optics																						
LED Count	Current & Watts	Optic	70CRI																			
			27K					30K					40K					50K				
			Lumens	B	U	G	LPW	Lumens	B	U	G	LPW	Lumens	B	U	G	LPW	Lumens	B	U	G	LPW
48LD	350 mA (49W)	T1	6108	3	0	3	124	6374	3	0	3	129	6308	3	0	3	128	6640	3	0	3	135
		T2	5987	2	0	2	121	6247	2	0	2	127	6182	2	0	2	125	6507	2	0	2	132
		T3R	6082	2	0	2	123	6347	2	0	2	129	6281	2	0	2	127	6611	2	0	2	134
		T3	6033	1	0	1	122	6295	1	0	1	128	6229	1	0	1	126	6557	1	0	1	133
		T3W	6140	1	0	2	125	6407	1	0	2	130	6340	1	0	2	129	6674	1	0	2	135
		T4W	6097	2	0	2	124	6362	2	0	2	129	6296	2	0	2	128	6627	2	0	2	134
		T4A	6267	1	0	1	127	6539	1	0	1	133	6471	1	0	1	131	6812	1	0	1	138
		T5	6439	3	0	1	131	6719	3	0	1	136	6649	3	0	1	135	6999	3	0	1	142
		T5W	6335	3	0	1	129	6611	3	0	1	134	6542	3	0	1	133	6886	3	0	1	140
T5WW	5965	3	0	1	121	6225	3	0	1	126	6160	3	0	1	125	6484	3	0	1	132		
48LD	530 mA (76W)	T1	9279	3	0	3	122	9682	3	0	3	127	9581	3	0	3	126	10085	3	0	3	133
		T2	9094	2	0	3	120	9489	2	0	3	125	9391	2	0	3	124	9885	2	0	3	130
		T3R	9239	2	0	3	122	9641	2	0	3	127	9540	2	0	3	125	10042	2	0	3	132
		T3	9164	2	0	2	121	9562	2	0	2	126	9462	2	0	2	124	9960	2	0	2	131
		T3W	9327	2	0	2	123	9732	2	0	2	128	9631	2	0	2	127	10138	2	0	2	133
		T4W	9261	2	0	2	122	9663	2	0	2	127	9563	2	0	2	126	10066	2	0	2	132
		T4A	9520	2	0	1	125	9933	2	0	2	131	9830	2	0	2	129	10347	2	0	2	136
		T5	9781	3	0	2	129	10207	3	0	2	134	10100	3	0	2	133	10632	3	0	2	140
		T5W	9624	3	0	2	127	10042	3	0	2	132	9937	3	0	2	131	10460	4	0	2	138
T5WW	9061	3	0	2	119	9455	3	0	2	124	9357	3	0	2	123	9849	4	0	2	130		
48LD	700 mA (101W)	T1	12027	4	0	4	118	12550	4	0	4	123	12419	4	0	4	122	13073	4	0	4	128
		T2	11787	3	0	3	116	12300	3	0	3	121	12172	3	0	3	119	12812	3	0	3	126
		T3R	11975	3	0	3	118	12496	3	0	3	123	12366	3	0	3	121	13017	3	0	3	128
		T3	11878	2	0	2	117	12394	2	0	2	122	12265	2	0	2	120	12911	2	0	2	127
		T3W	12089	2	0	3	119	12615	2	0	3	124	12483	2	0	3	122	13141	2	0	3	129
		T4W	12004	3	0	3	118	12526	3	0	3	123	12395	3	0	3	122	13047	3	0	3	128
		T4A	12339	2	0	2	121	12875	2	0	2	126	12741	2	0	2	125	13412	2	0	2	132
		T5	12678	3	0	2	124	13230	3	0	2	130	13092	3	0	2	128	13781	4	0	2	135
		T5W	12474	4	0	2	122	13016	4	0	2	128	12881	4	0	2	126	13558	4	0	2	133
T5WW	11745	4	0	2	115	12255	4	0	2	120	12128	4	0	2	119	12766	4	0	2	125		